

Green - 3km Loop (2.8km)

Red - 2km loop (1.8km)

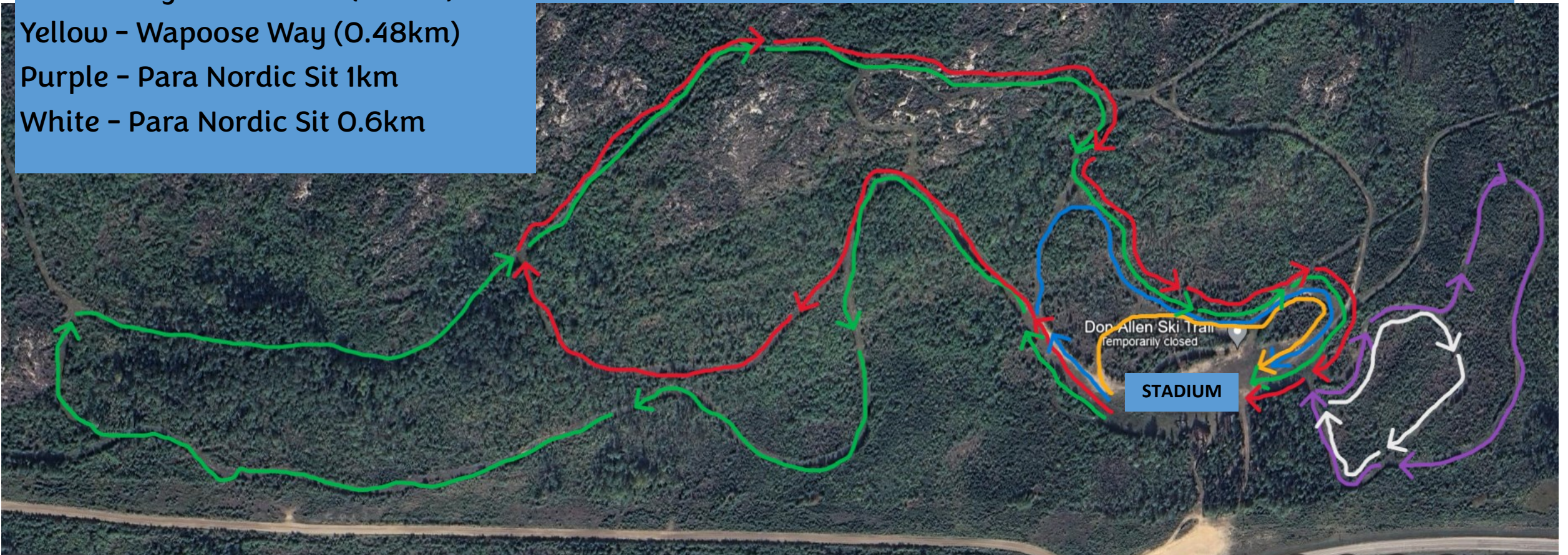
Blue - Boogie-on-down (0.7km)

Yellow - Wapoose Way (0.48km)

Purple - Para Nordic Sit 1km

White - Para Nordic Sit 0.6km

Don Allen Ski Trails Map—Sask Cup 1&2 December 16 & 17



LA RONGE
NORDIC SKI CLUB